



Welcome Pack for New Community Members



Welcome



Welcome to the towns of Gnowangerup, Borden & Ongerup

On behalf of the community, we would like to welcome you to the Shire and we hope this welcome pack assists you to have a smooth transition into your new town.

CONTACT US

Main Administration Office:

28 Yougenup Rd,
Gnowangerup, WA, 6335
P: 9827 1007
Email: gnpshire@gnowangerup.wa.gov.au
Website: www.gnowangerup.wa.gov.au
Facebook: www.facebook.com/ShireofGnowangerup
Instagram: @shireofgnowangerup007

Office Opening Hours:

Monday to Friday
9:00am - 4.30pm

Shire Services

Ranger Services

WA Contract Ranger Services attend the Shire of Gnowangerup once a week, however a ranger can be reached 24/7 by contacting Matt Sharpe on 0459 678 154.

All dogs and cats over the age of three months must be registered. Dog and cat registrations are due on 31 October each year and can be paid at the Shire Office



Planning and Building Applications

Planning and building applications can be found on our website or at our Shire Office.



Shire Services

Refuse Sites

Gnowangerup, Borden and Ongerup Landfill sites all operate during the times listed below only.

All three sites now operate under a swipe card system. All ratepayers and residents can receive a card from the Shire Administration Office. One card can be issued per household. Lost cards can be replaced at a cost of \$25.00.

Gnowangerup and Borden

Day	Opening Hours
Monday	7:00am – 5:00pm
Tuesday	7:00am – 5:00pm
Wednesday	7:00am – 5:00pm
Thursday	7:00am – 5:00pm
Friday	Closed
Saturday	7:00am – 5:00pm
Sunday	7:00am – 5:00pm
Public Holidays – NOT INCLUDING FRIDAYS	7:00am – 5:00pm

Ongerup

Day	Opening Hours
Monday	Closed
Tuesday	7:00am – 5:00pm
Wednesday	Closed
Thursday	Closed
Friday	7:00am – 5:00pm
Saturday	7:00am – 5:00pm
Sunday	7:00am – 5:00pm

Tourism

HORSEPOWER HIGHWAY



About the Horsepower Highway

The Highway is a dynamic route with an ever changing face with new machines being added frequently. Running along the Broomehill-Gnowangerup Road and through to the Stirling Range National Park along the Formby South, there is plenty of tractors on display! So come along and enjoy the drive!

The Horsepower Highway Map Is Live!

Another incredible achievement from the GNP360 group, saw the completion of a Google Map that has all the current tractors, their names, photos and some information on each!

So jump in the car, take yourself on a Sunday drive and follow the trail from start to finish!

Be sure to click on the pop up box that appears at the bottom of the screen for photos and details on each tractor!

[The Horsepower Highway \(A GNP360 initiative\) - Google My Maps](#)

Tourism

Travel Itinerary

Travelling from Perth? Click the link below to view the best route to view The Horsepower Highway

[Travel Itinerary- The Stirling Range NP via The Horsepower Highway](#)

Safety

The Horsepower Highway is used by trucks and cars so if you are stopping or reducing your speed to look at the tractors, please use your common sense and put safety first!

- Pull over, only when it is safe to do so and well off the road.
- Indicate
- Be mindful of other vehicles that may appear from around corners and be cautious of other tourists.

Contact

The Horsepower Highway is an initiative founded by the GNP 360 Co-Operative. Should you wish to contact the group or donate a tractor, please email gnp.360@outlook.com or message them on their Facebook Page <https://www.facebook.com/thehorsepowerhighway>

Tourism

The Stirling Range



80km south of Albany, the rugged peaks of the Stirling Range abruptly rise from a surrounding landscape of lowlands, most of which has been cleared for agriculture. The range stretches east-west for more than 65km and is characterised by stark cliff faces, magnificent views and abundant, vibrantly coloured flowering plants. No matter what time of year you arrive, there will always be some plants in bloom. The range is also home to the highest peak in the southern half of Western Australia – the 1095m Bluff Knoll.

An ideal time to visit is late spring and early summer (October to December) when the days become warmer and wildflowers are at their peak. Winter (June to August) is often cold and wet but can also offer beautiful crisp sunny days.

Visitors should come prepared for changes in weather during all seasons. Sudden cold changes may cause the temperature to drop and rain, fog or hail to set in. The Stirling Range is one of the few places in WA where snow occasionally falls.



Tourism

Cultural significance

The Aboriginal name for the range, Koi Kyenunu-ruff, means 'mist moving around the mountains' – a frequently seen occurrence.

The lowlands surrounding the peaks were important sources of food for Noongar (Nyoongar) people. Women gathered roots, seeds and fruit while men hunted kangaroos, wallabies and other animals.

Orchids and Wildflowers

The multitude of conditions enables more than 1500 species of flowering plants to exist here. Eighty species are found only in the range. The park is particularly rich in banksias, eucalypts, orchids and verticordias (feather flowers).



Eastern Lookout (Bluff Knoll car park)

Discover 'many eyes' and 'many faces' on the craggy cliffs of Bluff Knoll, a place of great significance to the traditional Aboriginal custodians of the range, the Noongar (Nyoongar) people.

Central Lookout (mid-point on Stirling Range Drive)

Take a 30-minute-return somewhat steep walk to the top of a small knoll to enjoy impressive views of surrounding peaks and the Porongurup Range to the south.

Tourism

Western Lookout (Baby Barnett Hill)

Enjoy striking views of the range stretching to the east.

Mountain bushwalks, backcountry and adventure

Bushwalking and adventure activities are a great way to discover the scenic beauty and amazing features of the park, but careful planning and preparation are essential, especially when accessing remote areas.

Remember:

- All walks are steep and have uneven surfaces.
- Plan your walk based on forecast weather conditions - hot and windy conditions are not ideal for walking due to the risk of bushfire and conditions may change.
- Contact the ranger if you are considering the Stirling Range Ridge Walk, other cross-country walks or camping overnight, and register your details at the shelter in the picnic area across the road from the Bluff Knoll Road entry station.
- Let someone know of your plans, including when you expect to return.



Tourism

Walking in Stirling Range National Park

Bluff Knoll

(Class 4 – height: 1095m, distance: 6km return)



Allow three to four hours. Bluff Knoll is the highest peak in the southern half of WA and has the most popular trail in the park. Scale its heights to take in outstanding 360-degree views.

Mount Trio

(Class 4 – height: 856m, distance: 3.5km return)



Allow three hours. This walk includes three peaks linked by a plateau. The first third of the path is steep but the remainder is easy. It takes sweeping views of Toolbrunup and other peaks to the south-west.

Mount Hassell

(Class 4 – height: 827m, distance: 3km return)



Allow three hours. This popular walk offers excellent views of Toolbrunup Peak.

Toolbrunup Peak

(Class 5 – height: 1052m, distance: 4km return)



Allow three to four hours. This is the second highest peak in the park, with steep rocky sections near the top. It requires fitness and agility and provides magnificent views.

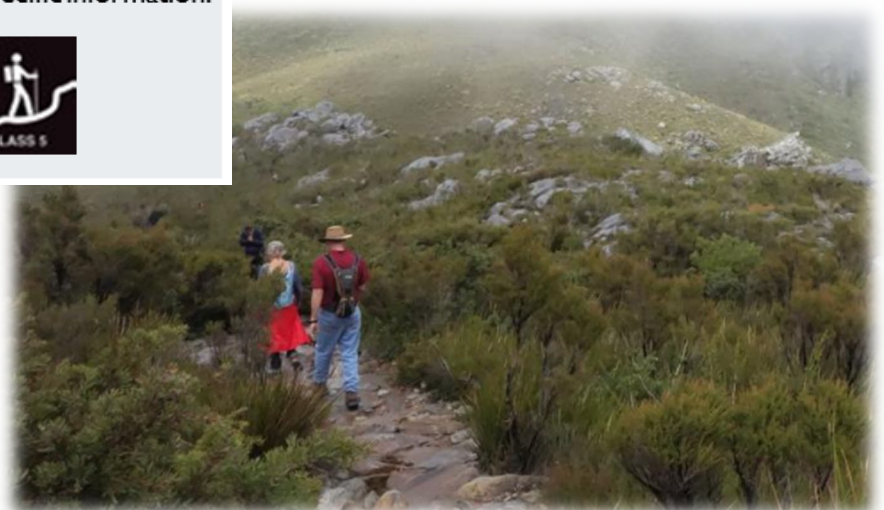
Walk trail classifications

Parks and Wildlife walk trails are assigned a 'class' to indicate degree of difficulty. The walk classes range from Class 1 (universal access), which is suitable for wheelchairs, to Class 5, which require walkers to be fit, experienced and suitably equipped. Check trailhead signs at the start of walks for specific information.



Visit the below website for more information

[Stirling Range National Park \(dbca.wa.gov.au\)](http://dbca.wa.gov.au)



Tourism



The Malleefowl Centre

Located in Ongerup, Western Australia, Yongergnow Malleefowl Centre is a community owned and operated centre for environmental awareness and education, with special focus on conservation of the mallee bush and the endangered Malleefowl. Yongergnow is situated in the Great Southern region, approximately halfway between Perth and Esperance.

Yongergnow offers guided tours through the centre and around the two aviary's housing malleefowl.

Tourism

The Centre includes the 'Fowl Play' exhibit that showcases the iconic malleefowl and its habitat and the story of how this amazing bird has galvanised local community conservation and economic development activities.

Immerse yourself in the mallee bushland surrounding the centre and take a short stroll to our two large mallee bush aviaries housing Malleefowl

The Centre comprehends 5 hectares of native bush and two vermin-proof aviaries. Visitors can also access our multi-media interpretive display to learn about conservation and local history.

Our retail area offers Ongerup and Malleefowl souvenirs, wildflower and bird publications and much more!

Yongergnow – Australian Malleefowl Centre is a multipurpose facility dedicated to the Malleefowl conservation and local community development.



▲ Visitors Information

Opening Hours

Monday: CLOSED

Tuesday: 9 AM – 4 PM

Wednesday: 9 AM – 4 PM

Thursday: 9 AM – 4 PM

Friday: 9 AM – 4 PM

Saturday: 9 AM – 4 PM

Sunday: CLOSED

Closed on Public Holidays

Café Open 9 AM – 2:30 PM Tuesday – Saturday

Entry Fee:

Adult (16+)	\$12.00
Child (6-15)	\$5.00
Concession	\$10.00
Family (2 adults & up to 4 children)	\$30.00
Groups (8 or more people and booked in advance)	\$10.00 per person

Tourism

MT Trio Bush Camp & Caravan Park

Mt Trio Bush Camp & Caravan Park is situated in a peaceful natural bush enclave on a working farm.

The caravan park consists of powered and unpowered sites, function and dining area and public amenities

During September and October, Guided Wildflower Orchid Walks operate daily and leave the camp lounge at 8.30am. Bookings are essential. These walks are graded 'easy' and explore the surrounding bushland. Over 100 species of orchids have been discovered over the years.

The indoor/outdoor camp lounge with a lovely cosy wood heater provides shelter from cooler nights. Also, it's a wonderful place to relax during the day. The lounge has a long history and has been lovingly restored from an old mine site and local farm.

Maps and information on mountain walks is available @ StirlingRangeTrails.com.au and in our Information Room.

ADDRESS:
4850 Salt River Road
Amelup (Stirling Ranges)
WA 6338

Ph: 0499 714 704
Monday – Friday
www.mttrio.com.au



Tourism

Gnowangerup Aboriginal Museum & Keeping Place

This museum shows the history of the indigenous people associated with the local Mission and Stirling Range, who used the plains as hunting grounds for thousands of years. Built from local bricks by builder Charlie Parker in 1913. It was home to many people in the area. If the building could talk it would tell you how it was.

- A new home for the Baptist pastor Reverend Edward Clugston, who lived there until 1919.
- A sanctuary for returned soldier Alfred Strachan, local tailor, and his wife Elizabeth in the early 1920s.
- A boarding house run by Mrs Jack Moran in the later 1920s.
- A much-loved home of George Hendry, storekeeper, and his family for over four decades.
- A hive of activity and ideas when, in 1972, it became the Gnowangerup Noongar Centre, owned and run by the New Era Aboriginal Fellowship.
- Left vacant and fell into disrepair after the new hall, which became the Aboriginal Noongar Centre, was built next door in 1989.
- Saved from demolition in 1994 when the Gnowangerup Historical and Preservation Society banded together to try to turn it into a Noongar and Pioneers Museum.
- Recognised on the Shire of Gnowangerup Municipal Inventory of historic buildings in 1996.
- Renovated for its new purpose as a Noongar heritage centre, training local Noongar men in building skills during renovation in 2010 and 2011.



Tourism



Entered, in May 2012, into the Western Australian State Heritage Register, in recognition of its importance as the first Aboriginal non-government rural support centre.

For more information

Contact the Gnowangerup Aboriginal Corporation Chair, Robbie Minter on 0439 982 008.

Tourism

Aylmore Mineral Springs



The Aylmore Mineral Springs is located at the northern end of town, along Park Road and is set amongst a beautiful picnic & BBQ area. The high iron content in the water accounts for the unusual colour. The spring flows at over 2 litres per second.

Tourism

Nobarach Playground, Gnowangerup Community Park



Location - Yougenup Road Gnowangerup (opposite primary school)

The park is a great place to stop and enjoy the surroundings. It features a playground, BBQ and toilet facilities among beautiful gardens.

Hours of Operation: From: 7:00 AM To: 8:00 PM

Restrooms Available: yes

Recommended for travellers?: yes

BBQ Area?: Yes

Entrance Fee: Free

Playground Owned/Managed By: Shire of Gnowangerup

Tourism

Stirling Range Trails Website and Phone App

<https://www.stirlingrangetrails.com.au>



StirlingRangeTrails

WESTERN AUSTRALIA

[About](#)

[Fuel & Food](#)

[Accommodation](#)

[Download App](#)

[Get Directions](#)

[Mountain Walks](#)

[Drives](#)

[Mountain Bike](#)

[Wildflowers](#)

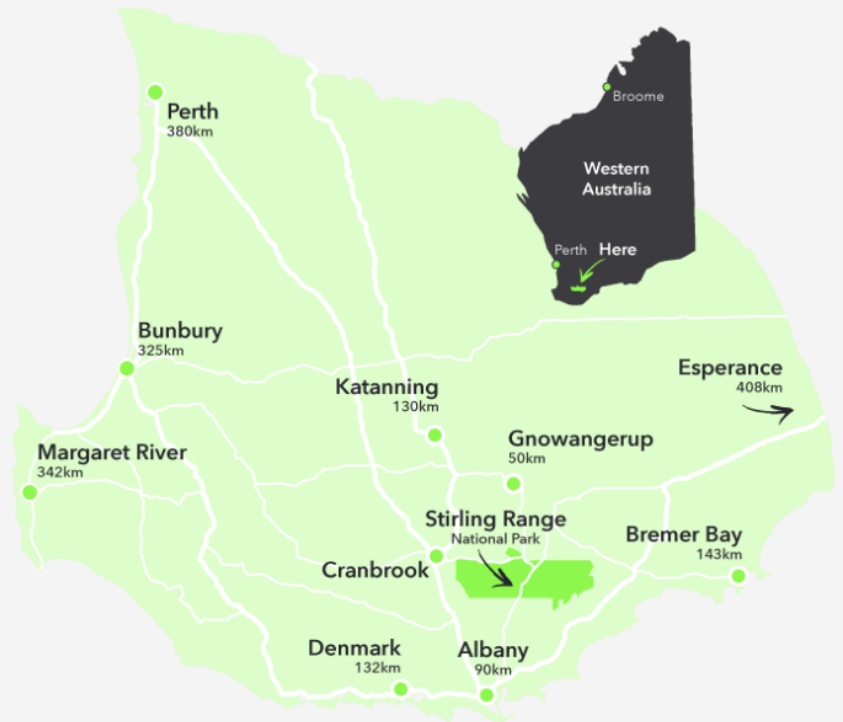
Get Directions

By car, the Stirling Range are 4.5 hours southeast of Perth and just one hour's drive north from Albany in Western Australia.

The nearest towns to the north are Gnowangerup (50km) and Borden (45km) and Cranbrook is on the western end of the Range.

All roads leading to the Stirling Range are sealed although some travel on good unsealed roads may be required to reach some mountains.

Distances shown are approximate.



Getting Here



**Mt Trio Guided
Wildflower - Orchid
Walks**



**Hidden Treasures
Orchid & Wildflower
Tours**



**Hidden Treasures
Dawn & Dusk Bird
Walks**

Community Resource Centers and Libraries

Gnowangerup CRC

47 Yougenup Road
Gnowangerup WA 6335

Phone: 08 9827 1635

manager@gnowangerupcrc.com.au

OPEN: Monday & Friday 9am – 3pm

Tuesday, Wednesday & Thursday 9am – 4pm

CLOSED: Saturday & Sunday



Gnowangerup Library

47 Yougenup Road
Gnowangerup WA 6335

Phone: 08 9827 1635

library@gnowangerup.wa.gov.au

OPEN: Tuesday & Thursday 9am – 4pm

Wednesday 9am – 12pm

CLOSED: Saturday's & Sundays



Community Resource Centers and Libraries

Yongergnow-Ongerup CRC

[Lot 260 Jaekel Street](#)

[ONGERUP WA 6336](#)

Phone: 08 9828 2325

manager@ongerupcrc.net.au

OPEN: 9am - 4 pm Tuesday- Saturday

CLOSED: Sunday & Monday



Proudly Supported By:  Government of Western Australia
Department of Regional Development  ROYALTIES
FOR REGIONS



Ongerup Library

[Lot 260 Jaekel Street](#)

[ONGERUP WA 6336](#)

Phone: 08 9828 2325

ongerup@crc.net.au

OPEN: 9am - 4 pm Tuesday- Saturday

CLOSED: Sunday & Monday



Sporting Clubs and Facilities

Gnowangerup



Gnowangerup Sporting Complex

Strathaven Road, Gnowangerup WA 6335

The Gnowangerup Sporting Complex is the home of sport and recreation in the Gnowangerup town. In 2016 the Gnowangerup Community Swimming Pool was relocated to the site.

Run by a fantastic group of volunteers the facility has many sports to offer and a great conference/meeting room.

Facilities

Main Function Room: The function room is licensed to hold 400 people, with tables and seating for approximately 110. It is complete with a sound-system and projector. The highly versatile space is suitable for events of all kinds, from conferences, meetings and private functions/events.

Kitchen: The large commercial kitchen would please any event caterer and is complete with large cool room and a spacious bar area.

Sporting Facilities: The Gnowangerup Sporting Complex consist of multi-purpose hockey/tennis courts, cricket practice nets, football oval, two indoor netball/basketball courts.

Gym: The facility has a great gym that is accessible 24/7.

Contact: Email - gnpscmanager@gmail.com or call Gnowangerup CRC 9827 1635

Sporting Clubs and Facilities

Gnowangerup Football Club

Zac Walsh – zac.walsh@nutrien.com.au



Gnowangerup Hockey Club

Geena Batchelor – secretary.ghlc@outlook.com



Gnowangerup Netball Club

Neah Stewart – gnpnetballclub@gmail.com



Gnowangerup Tennis Club

Christopher Wise – christopher1wise@hotmail.com



Gnowangerup Junior Cricket Club

Tom McInerney – tom.mcinerney@bigpond.com



Gnowangerup Bowling Club

Victor Wellstead – [0428271141](tel:0428271141)



Sporting Clubs and Facilities

Early Morning Swimmers

Shire Office – [98271007](tel:98271007)



Gnowangerup Golf Club

Wayne Pech – pechy@westnet.com.au



Pilates Classes Mat & Reformer

Megan – www.motion-physio.com.au



Mat

Sally – sallyhousefitness@gmail.com



Gnowangerup Gym Membership

Gnowangerup CRC - [9827 1635](tel:98271635)



Sporting Clubs and Facilities

Borden



Borden Pavilion

Stone Street, Borden WA 6338

Rebuilt in 2003 the Borden Pavilion is a proud and well utilised community space, providing an outstanding venue for various social, sporting and corporate events throughout the year.

Borden Pavilion is located centrally within the Shire of Gnowangerup, just 30 kilometres from the Stirling Range National Park, making it one of the premier regional function venues in the Great Southern.

From fitness classes to floral workshops, agricultural seminars to corporate sundowners, live music concerts to community sporting events, Borden Pavilion is the ideal venue for an event of any kind.

Check them out on Facebook for current news and events. [Borden Pavilion](#) | [Borden WA](#) | [Facebook](#)

Contact – Natalie Milne 0428 279 220

Email: admin@bordenpavilion.com.au

Website – www.bordenpavilion.com.au

Sporting Clubs and Facilities

Borden Bowling Club

Tim O'Meehan – [0428279296](tel:0428279296)



Borden Golf Club

William Bungey – [0428276017](tel:0428276017)



Active Farmers

Gnowangerup

Boyd – [0427990531](tel:0427990531)

Borden & Ongerup

Geena Batchelor – [0448281158](tel:0448281158)



Borden Cricket Club

Connor Smallwood – [0477887557](tel:0477887557)



Sporting Clubs and Facilities

Ongerup



Ongerup Sporting Complex

Jaekel Street, Ongerup WA 6336

Ongerup Sporting Complex main building has a capacity of 200pax, with bar and kitchen facilities. This area is ideal for meetings and social gatherings & fitness classes.

The Complex has a large football oval and play ground

In 2021 we will have a multipurpose room at the back of the Complex which will serve as a Day-care every Friday, operated by Gnowangerup Occasional Day-care. This versatile room can also be used as a crèche if you have a function/meeting in main Complex room or are ideal to hold children's birthday's and small group meetings.

Contact - ongerupsportingcomplex@gmail.com

Sporting Clubs and Facilities

Boxwood Football Club

Rohan Vaux – 0429 870 690



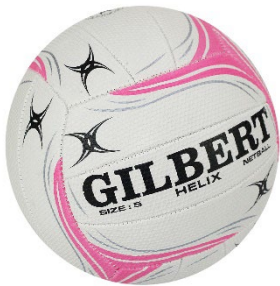
Boxwood Hockey Club

Caroline House – 0408 920 615



Boxwood Netball Club

Shenae Bowen – 0428 366 755



Ongerup Darts Club

Ongerup Hotel - 98282749



Ongerup Book Club

Roz Thompson – 0428 282 085



Ongerup Golf Club

Bill Tiller – [0427 787 059](tel:0427787059)



Sporting Clubs and Facilities

Ongerup Tennis Club

Roz Thompson – 0428 282 085



Ongerup Bowling Club

Vicki O'Neill – [0428282282](tel:0428282282)



Pilates Classes

Dimity – 0448233985

<https://www.facebook.com/sweat.inthe.sticks>



Ongerup Gym Membership

Ongerup CRC - [98282325](tel:98282325)



Ongerup



Ongerup Community Development Inc

Working for our Community

On behalf of the Ongerup Community Development Inc, we take this opportunity to welcome you to our district. Ongerup prides itself on the friendliness of its citizens and extremely active clubs/organisations.

We work in partnership with the Ongerup community to create social and economic conditions that strengthen the community and foster a vibrant and prosperous town.

If at any time you feel like you would like to discuss any matter relating to your move to our town, please feel free to reach out to our friendly OCD members

President Graeme Savage – 0428 282 101

Vice President Jye Duggen – 0427 532 098

Secretary Roz Thompson – 0428 282 085

Town rubbish is collected every Thursday mornings and recycling every alternate week. See the local post office to arrange your mail delivery

Pubs And Cafés

ROAST & BREW CAFE

Opening Hours
Monday – Friday
7am to 2pm
Saturdays & Sunday's
7am – 12pm
Yougenup Road, Gnowangerup



BORDEN TAVERN

Opening Hours
Mondays Closed
Tuesdays to Sunday
4pm – late Kitchen opens at 6pm
13 Moir Street, Borden
98281103



YONGERGNOW MALLEEFOWL CENTRE CAFÉ

Opening Hours
Tuesday – Saturday
9am – 2.30pm
Lot 260 Jaekel St, Ongerup WA 6336
9828325



ONGERUP HOTEL

Opening Hours
Wednesday – Sunday
3pm - Late
45 Jaekel Street, Ongerup
98282001



Pubs And Cafés

Ongerup Lunch Bar

Opening Hours

Monday – Friday 6.30am – 6pm

Friday & Saturday 10am – 3pm

30 Eldridge Street Ongerup 6336

Facebook/Ongerup Lunch Bar

98282747



BLUFF KNOLL CAFE

Opening Hours

Thursday 8am – 4pm

Friday & Saturday 8am – 6pm

Sunday & Monday 8am – 4pm

8620 Chester pass Road Amelup 6338

Jacqui.bluffknollcafe@hotmail.com



GNOWANGERUP ROADHOUSE

Opening Hours

Monday to Sunday

6:30am – 8pm

Kitchen closes at 7:30pm

Yougenup Road, Gnowangerup

98271239

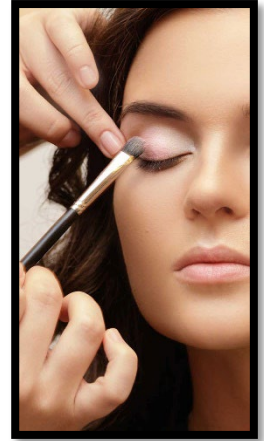




Beauty Services

The Bank

The Bank, Yougenup Road, Gnowangerup WA 6335



Adele Collins Makeup Artistry

Tuesday – Friday 9am – 4pm

Thursday 9am – 7pm

K.Beth Hair Vault

Monday 9am – 5pm

Thursday 3pm – 8pm

Saturday 8am – 12pm

- ❖ Makeup Application
- ❖ Eyebrow Wax
- ❖ Eyebrow Lamination
- ❖ Eyebrow Tinting
- ❖ Eyelash tinting
- ❖ Arm Wax
- ❖ Lip Wax
- ❖ Leg Wax

- ❖ Blonde and Colour Specialist
- ❖ Styling
- ❖ Womens Cuts
- ❖ Mens Cuts
- ❖ Kids Cut



Book via QR code:



Email: TheBank@gmail.com

Health and Medical

LIVINGSTON
Medical



GNOWANGERUP MEDICAL CENTRE

BOOK ONLINE NOW

livingstonmedical.com.au

- Family Medicine
- Vaccinations
- Skin Checks
- Holistic Care
- Chronic Disease Management
- Medical Procedures

Livingston Medical is a mixed billing practice

Dr Brian West
Dr Shady Makar
Dr Michael Livingston

08 9827 1116

32 McDonald Street
Gnowangerup

Open 8.30-5pm
Monday - Friday

Gnowangerup Hospital

Broomhill-Gnowangerup Road, Gnowangerup WA 6335

Phone: 9827 2222

Emergency Services 24/7

PATS Services Weekdays 9am – 4pm



Health and Medical



Gnowangerup Pharmacy

34 Yougenup Road Gnowangerup WA 6335

Phone: 98271046

Email: gnowangeruppharmacy@gmail.com

Opening Hours

Monday – Thursday: 9am – 5pm

Friday 9am – 3pm

Saturday & Sunday Closed

Child & School Community Health Nurse

Yougenup Road, Gnowangerup WA 6335

Ph: 98272290

Mobile: 0438 711 532

Email: Amber.Crichton@health.wa.gov.au



Health and Medical

Chaplin & Drug and Alcohol Services

Gnowangerup District High School

Ph: 98272100

Southern AgCare INC &

Counselling Servicing

PO Box 105 Gnowangerup 6335

Ph: 98271552

Email: southernagcare@westnet.com.au

www.southernagcare.org.au

SOUTHERN AGCARE
Counselling and Support for Rural People

**OUR COUNSELLORS ARE CONFIDENTIAL,
MOBILE AND FREE**

- INDIVIDUAL COUNSELLING
- FAMILY COUNSELLING AND SUPPORT
- COMMUNITY SUPPORT SERVICES

Servicing the Shires of Gnowangerup, Jerramungup, Kent, Katanning, Broomehill/Tambellup, Woodanilling, Cranbrook, Kojonup, West Arthur, Wagin, Dumbleyung, Lake Grace and Plantagenet

SELF REFERRALS ARE ACCEPTED

Referral forms available at www.southernagcare.org.au or by emailing admin@southernagcare.org.au

Southern Agcare Inc
PO BOX 105
Gnowangerup WA 6335
98271552

Proudly supported by Department of Communities Child
Protection and Family Support

Motion Physio and Pilates Classes

39 Yougenup Road, Gnowangerup WA 6335

Book Online: Motion-physio.com.au

Phone: [0459 910 706](tel:0459910706)

OUR SERVICES

Physio



Reformer Pilates



Mat Pilates



Education And Childcare



Centre	Opening Dates & Times	Contact
Day Care Gnowangerup Family Support Association	8am – 4pm Tuesday – Friday School Term	Lot 87 Aylmore Street, Gnowangerup 9827 1454 nobarach@gfsa.org.au
Gnowangerup District High School	9am – 3pm Monday – Friday School Term	61 Yougenup Road, Gnowangerup 9827 2100 gnowangerup.dhs@education.wa.edu.au
Gnowangerup Playgroup	9.30am Wednesday's School Term	Gnowangerup Sporting Complex Strathaven Road, GNOWANGERUP Western Australia 6335 gnowangerupplaygroup@gmail.com
Ongerup Primary School	9am – 3pm Monday – Friday School Term	12 Lamont St, Ongerup 9828 3200 ongerup.ps@education.wa.edu.au
Ongerup Toddler Time	9am – 10am Every Second Thursday	Yongergnow-Ongerup CRC 98282325
Ongerup Mobile Childcare	Every Friday School Term	Maddie – 0427 271 454
Borden Primary School	9am – 3pm Monday – Friday School Term	Stone Street, Borden Borden.PS@education.wa.edu.au
Borden Mobile Childcare	8.45am – 4pm Monday's School Term	Borden Pavilion bordenchildcare@gfsa.org.au 0457917420



GNOWANGERUP FAMILY SUPPORT ASSOCIATION INC.

GfSA is a non for profit, community run association who supports local families to nurture and develop children in their early years. We strive to provide our rural communities with high quality early childhood education that is accessible, affordable and inclusive. Established in 1988, we operate 5 services across the region for children aged 0-7 years. Operating during school terms only.

Nobarach - Tuesday-Thursday 8am-4pm \$100

Pre Kindy Mondays 9am-1pm \$50

After Kindy Care 1pm-3pm \$25

Joeys @ Nyabing Mondays 8:30am-3:30pm \$87

Little Learners @ Borden Tuesdays 8:30am-3:30pm \$87

Newdegate Thursdays 8:30am-3:30pm \$87

Little Learners @ Ongerup Fridays 8:30am-3:30pm \$87

Fees are exclusive of CCS which most families receive from centrelink, CCS is paid to us and we charge the gap fee. We also have casual options available.

We base our curriculum on the Early Years Learning Framework - Belonging, Being, Becoming, and this is implemented by our qualified coordinators and educators.

for more information



08 9827 1454
0499 557 567



director@gfsa.org.au



Gnowangerup Family Support Association



Come and join the Gnowangerup & Districts Toy Library

Location: inside the Gnowangerup CRC.

Opening times: 9am - 3pm, Monday - Friday

Cost: Families: \$40 per financial year

Grandparents: \$10 per financial year

How to join: complete a google form. The link for this can be found on our Instagram or Facebook page

What toys do we have?

This is just some of them....

- Dress ups
- Kinderboard
- Ride on cars
- Walkers
- Rocking bowl
- Board games
- Soccer goals
- Connetix
- Tractors
- Animals
- Bikes
- Blocks
- Dolls
- Squigz
- Baby toys
- Train tracks set
- Mini trampoline
- Musical toys
- Play kitchen
- Messy play table
- Foam climbing blocks

Facebook



Contact us:

gnowangeruptoylibrary@gmail.com

Or via Facebook or Instagram

Instagram



PRE-KINDY PROGRAM 2027 NOW ENROLLING!

We are excited to once again offer our Pre-Kindy program for 2027! If your child is starting school in 2027 then this is the program for you. 2027 Kindy's are also welcome however priority will be given to 2027 Kindy's.

Pre Kindy will run on Monday's, during the school term, at Nobarach Childcare Centre, Gnowangerup. Sessions are as follows:

Term 1 & 2: 9am to 1pm (with after care available from 1pm to 3pm.)
Term 3 & 4: 9am to 3pm

Through our program your child will:

- develop school readiness skills
- learn the routine and structure of kindy
- learn the appropriate social and emotional behaviours expected at kindy
- develop numeracy and literacy skills
- and most importantly have lots and lots of fun

Teacher: Caroline Sprigg

I have four children and live on a farm in the Tambellup Shire. I have a Bachelor of Early Childhood Education. Before I had children I was the Pre Primary teacher at Gnowangerup District High School. I am also the President of Gnowangerup Playgroup and Gnowangerup Smart Start.

Please email Caroline Sprigg at prekindy@gfsa.org.au or 0427614569 for the enrolment.



GNOWANGERUP FAMILY PLAYGROUP

COME AND JOIN US!

WEDNESDAY DURING SCHOOL TERMS, FROM 9:30AM - 11:30AM

AT GNOWANGERUP SPORTING COMPLEX ON STRATHAVEN RD.

ALL PARENTS, CARERS, GRANDPARENTS OF 0-4 YEAR OLD CHILDREN ARE WELCOME.

PLAY SESSION

WE HAVE AN EARLY CHILDHOOD TEACHER WHO RUNS A PLAY SESSION EACH WEEK INCLUDING:
MESSY PLAY
SENSORY PLAY
PAINTING
CRAFTS
FINE MOTOR ACTIVITIES
GROSS MOTOR ACTIVITIES
STORYTIME



FOR MORE INFORMATION CONTACT CAROLINE ON 0427614569

Churches and Religious Groups

Gnowangerup Community Church

Gnowangerup
Community Church

Lyndall Hanbury – 0405 805 143

admin@gnowangerupcc.com.au

Facebook

[www.facebook.com/gnowangerup/
communitychurch](https://www.facebook.com/gnowangerup/communitychurch)

Gnowangerup Youth Group



Dani – 0428 400 734

youth@gnowangerupcc.com.au

Years 7 – 12

Fridays 7pm – 9pm during school
term

Refreshments provided

Ongerup Catholic Church



Jan Slee – 0428 503 535

Sunday School – Merv Hooper
0428 282 143

Volunteer Groups & Committees

Group Name	Contact
Gnowangerup Volunteer Ambulance Services	Robin - 0487569673
Gnowangerup Volunteer Fire Brigade	Mandy gnpseslocalmanager@gmail.com
Ongerup & Borden Volunteer Bushfire Brigade	Gnowangerup Shire Office – 98271007 Darren Baum – 0427 471 015
Gnowangerup Heritage Group	Edith Robertson - 0417 929461
Gnowangerup Men's and Ladies Shed	gnp_mens_shed@outlook.com
Gnowangerup P&C Committee	gdhs.pandc@gmail.com
Ongerup P&C Committee	Emma Spink – 0447 455 702
Borden P&C Committee	bongy@bordernet.com.au
Ongerup Women in Farming Enterprise (WIFE)	Sally Carpenter – 0427 561 209
Youngergnow Australian Malleefowl Centre	visitor@yongergnow.com.au
North Stirling Pallinup Natural Resource INC (NSPNR)	nspnr@nspnr.com.au



Accommodation



Gnowangerup Short Stay Chalets

Richardson Street Gnowangerup

9827 1007 or book online

<https://www.gnowangerup.wa.gov.au>

Gnowangerup Caravan Park

Richardson Street Gnowangerup

9827 1007 or book online

<https://www.gnowangerup.wa.gov.au>



Two Trees Tiny Home - Short Stay

Dan and Dani – 0430 038 021

Book Online - [The Two Trees Tiny - Tiny houses for Rent in Pallinup, Western Australia, Australia - Airbnb](#)

Accommodation



Butterfly Cottage

37 Yougenup Road Gnowangerup

Shantell 0401 024 387

Des and Karen Murray's bed and breakfast

2 Searle Street Gnowangerup

0400 885 405



Borden Guesthouse and lodge

John Street Borden

0429 179 234



Accommodation



Ongerup Caravan Park

11 Walker Street Ongerup

0458524342/98282090

Mt Trio Caravan Park

4850 Salt River Road Amelup

0499714704



Ongerup Hotel

24 Lamont Street Ongerup 6336 – 98282001

Ongerup Duplex

Carpenter Street Ongerup 6336 – 0428 282 941

Accommodation

Stirling Range Retreat

8639 Chester Pass Road Stirling Range National Park

98279229



The Lily

9793 Chester Pass Road Amelup WA

98279205

Business Directory

DAVIS

BULLDOZING & EARTHMOVING



- Dams
- Enlargements
- Gravel Stockpiling
- Flat Catchments
- Rock & Stump Removal
- Excavator

Contact John: **0428 271 144**

PO Box 257 Gnowangerup WA 6335
Email: jdkdavis@hotmail.com



The Rustic Chicken
Newsagency and Gift Shop
98271060



Mulesing Contractor

Book in early

Gnowangerup & Surrounds

Toby – 0455 600 070



Business Directory

GNOWANGERUP
FUEL
SUPPLIES



8:30am to 5:00pm Monday to Friday

Office: 9827 1124 | Ron: 0428 285 012 | Fax: 9827 1066
Cnr Corbett and Cecil St, Gnowangerup
gnpfuelsupplies@westnet.com.au

24/7 Fuel - OPT on Quinn St - EFTPOS, Shell, Motorpass
Bulk Fuel delivered fuel pumps, meters, handpieces
Mobil Oils AdBlue and equipment
Exide Batteries grease and grease guns



 (08) 9827 1300

 24 Yougenup Road, Gnowangerup WA 6335

 **B.P. HARRIS & SON** 

"You Name It We Make It—You Break It We Fix It."
54 Quinn Street | PO Box 20, Gnowangerup WA 6335
Phone: (08) 9827 1076 Fax: (08) 9827 1136
Email: bpharris@wn.com.au www.bpharrisandson.com.au



- WELDING
- ENGINEERING
- FABRICATION

- BEARINGS
- PULLEYS
- STEEL SUPPLIES

Monday—Friday 8am to 5pm - Closed between 12—1pm



✉ sales@duraquip.com.au

☎ 1800 27 1800

📍 Regional Branch

PO Box 1/102 Cecil St.

Gnowangerup WA 6335



JOHN DEERE



**AFGRI Equipment -
Gnowangerup**


10 Yougenup Road, Gnowangerup, WA, 6335

<https://afgri-equipment-gnowangerup.stihl-dealer.com.au/en-au/>

(08) 9827 1207

STIHL

Business Directory



MANDAKO
LAND ROLLER

MANDAKO
STUBBLE CRUNCHER

MANDAKO
STORM

LOFTNESS
ROCK PICKER

LEON & MK MARTIN
GRADER BLADES

MK MARTIN
LAND LEVELERS

HORST
COMB TRAILER

BP IMPORTS
SWATHER CONTRACTING

BP IMPORTS
DRY HIRE / RENTALS

Australia
BP IMPORTS
EQUIPMENT SOURCING

NEW
Products

BP IMPORTS
NEW PRODUCTS



DJLemin
PAINTING SERVICES

0429 291 738
dazzalemin@outlook.com

RESIDENTIAL | COMMERCIAL | INDUSTRIAL



32 Whitehead Road Gnowangerup 6335
**PARTS SUPPLIER FOR TRUCKS,
TRAILERS & MACHINERY**
CAMPING & 4x4 SUPERSTORE



41 Yougenup Road
Gnowangerup, 6335, WA

 (08) 9827 1109



55 Yougenup Road, GNOWANGERUP Western Australia 6335
(08) 9827 1060

Business Directory

GROVES Logistics PAUL 0429 932 633

GROVES Livestock REECE 0427 490 014

FERTILISER ~ LIME ~ GRAIN ~ HAY ~ WOOL
BULK & GENERAL FREIGHT

ALL YOUR LIVESTOCK NEEDS

AUSPAN

DESIGN & CONSTRUCTION OF
STRUCTURAL STEEL SHEDS

- Machinery Sheds
- Grain Shed Packages
- Shearing Sheds
- Hay Sheds
- Industrial Factories
- Warehouses


P: 1300 271 220
W: auspangroup.com.au

60 x 21 x 7.5m Grain Storage Shed, Gnowangerup WA

**GNOWANGERUP COMMUNITY
OPSHOP**

St Margaret's Anglican Church Yougenup Rd , Gnowangerup,
WA, Australia, Western Australia

Business Directory



ARMADILLO Group

Oils & Grease

- Morris and Texxon

Lubrication Equipment

- Oil Pumps
- Diesel Tanks
- Hose Reels for Oil Grease and Diesel
- Grease Guns and Air Grease Kits
- Auto Lube Systems

Hydraulic Hose Repairs

- New hoses made to order

Hydraulic Components

- Hydraulic Motors
- Hydraulic Pumps
- Hydraulic Cylinders
- Valve Blocks

1300 767 705
E: sales@armadillogroup.com.au
www.armadillogroup.com.au

**The Easy Choice for
Lubrication & Hydraulics**



**Natural Resource
Management...**
... the way forward
in farming



P 9828 1086
M 0437 248 206
89 Moir Street, Borden
E admin@nspnr.com.au
W www.nspnr.com.au



Trappitt Street, BORDEN Western Australia 6388
(08) 9844 3243

Business Directory



36 Eldridge Street, Ongerup, 6336

OPENING HOURS: Monday - Friday 8 am – 5.30 pm
Saturday 8 am – 12 noon

Phone: 98 282 288 Fax: 98 282 008 Mick: 0427 641 044
Harry: 0400 184 764 Deb: 98 282 288

General Store Email: generalstore@ongerup.com.au

Farm Supply Email: farmsupplies@ongerup.com.au

GROCERIES & GENERAL STORE

Weekly Fresh Fruit & Vegies, Meat, Post Office, Liquor, Giftware, Stationery,
Hardware, White Goods, Bottled Gas

FARM SUPPLIES

Cropping Chemical, Animal Health, Fencing, Water Supplies, Industrial Gases,
Batteries & Oil, V-Belts, Steel Supplies

*Ongerup Farm Supplies are Agents for Primaries Merchandise, Primaries Livestock,
Summit Fertiliser, Elgas, Bennetts Batteries & Oil, BOC Gas*

Business Directory

CULTURAL AWARENESS - MENTORING - LEADING TO CONCILIATION



WHO WE ARE

Yaakiny Services is a proud Noongar led family business delivering Cultural Awareness, Community Mentoring, and services across the Great Southern Region of Western Australia.

With over 30 years of experience, Yaakiny is committed to creating positive pathways for individuals, families, organisations, and communities.

WHY CHOOSE US

- ✓ Noongar-owned and family-led
- ✓ Over 30 years' regional experience
- ✓ Community-focused, culturally grounded
- ✓ Trusted across public and private sectors
- ✓ Supporting Aboriginal controlled organisations
- ✓ Supporting regional sporting clubs

ABOUT OUR SERVICE

We build stronger communities by delivering cultural awareness services

Youth and family mentoring, Corporate, Community Cultural and Organisational support

Mentoring regional projects throughout the Great Southern and supporting workforce development

YAAKINY SERVICES

Noongar Family Business | Great Southern Region, WA

Building stronger communities through culture, connection, and capability.

Contact Robbie Minter ☎ 0439982008 ✉ yaakinyervices@outlook.com

Business Directory



Borden Post Office

15 Moir Street, BORDEN, WA, 6338

(08) 9828 1045



Address:

43 Eldridge Street
Ongerup Western Australia

Get Directions

 **08 9828 2101**